

INSTALLATION INSTRUCTIONS

1. SLIP ESCUTCHEON PLATE & STOP WASHER OVER SHAFT & INSERT SHAFT & STOP PINS INTO HOLES INTO PANEL.
2. SLIP TAB WASHER OVER SHAFT, RUN NUT UP TO PANEL, THEN BACK OFF TO OBTAIN SMOOTH OPERATION & BEND TABS UP AGAINST FLATS OF SQUARE UNITS.
3. RUN SECOND NUT ONTO SHAFT, THEN SLIDE PAWL & ACTUATOR ON SHAFT (MAKE SURE EACH IS PROPERLY POSITIONED), AND THIRD NUT, THEN ADJUST TO CORRECT GRIP AND TIGHTEN NUTS.

| REV | DATE | DRAWN/CHKD | DESCRIPTION | PART NUMBER | MATERIAL | FINISH |
|-----|-----------|------------|-----------------|--------------|------------|------------|
| Z | 11APR2005 | BRP/RLR | PRN: P2005-0594 | 68-10-101-10 | SEE NOTE B | SEE NOTE B |
| | | | | | | |
| | | | | | | |
| | | | | | | |

NOTES:

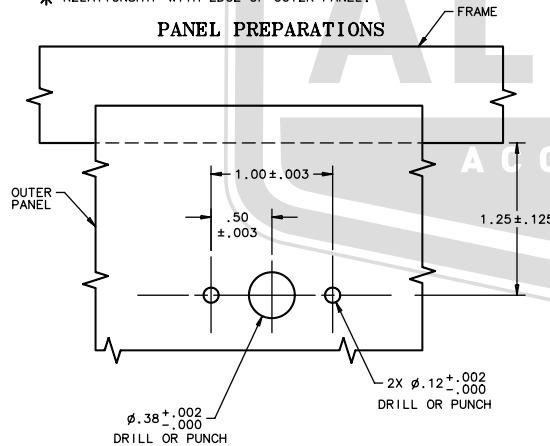
- A. FASTENER SHIPPED UNASSEMBLED, PACKAGED ONE UNIT PER BAG.
- B. PIN: STAINLESS STEEL, NATURAL. SHAFT, SCREW, HEX NUT, TAB WASHER, AND STOP WASHER: STEEL, ZINC FLAKE COATING. FERRULE & ESCUTCHEON PLATE: DIE CAST ZINC, CHEM. PROTECTIVE FILM. *T*-BAR: STEEL, ZINC PLATE PER QQ-Z-325 TYPE 1, CLASS 2, PLUS CHROMATE DIP-BRIGHT. PAWL: DIE CAST ZINC, ZINC FLAKE COATING.

TABLE I

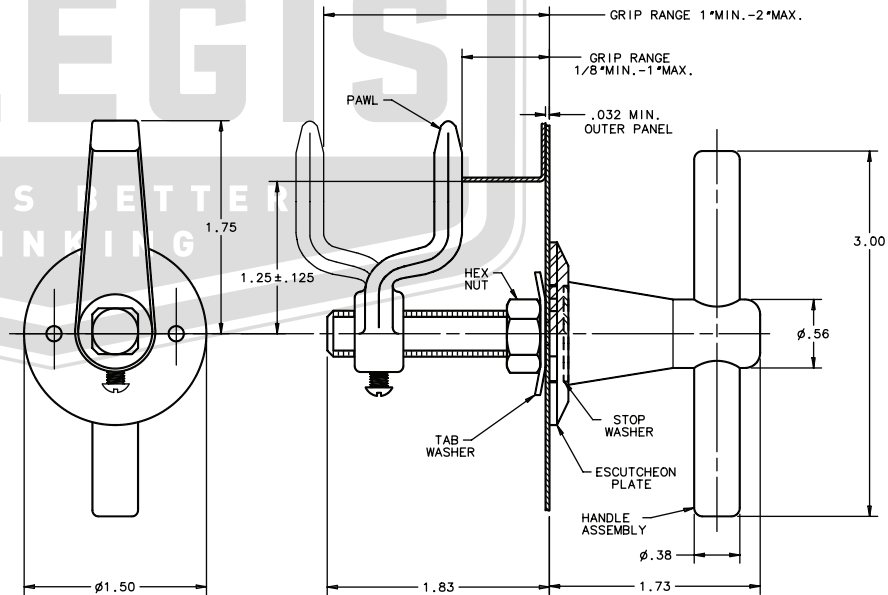
| TYPE "A" OPERATION | |
|--------------------|--|
| *T*-BAR | ORIENTATION WITH *T* BAR |
| PARALLEL | PAWL PERPENDICULAR- STOP WASHER PARALLEL |
| PERPENDICULAR | PAWL PARALLEL- STOP WASHER PERPENDICULAR |

| TYPE "B" OPERATION | |
|--------------------|---|
| *T*-BAR | ORIENTATION WITH *T* BAR |
| PARALLEL | PAWL PERPENDICULAR- STOP WASHER PERPENDICULAR |
| PERPENDICULAR | PAWL PARALLEL- STOP WASHER PARALLEL |

* RELATIONSHIP WITH EDGE OF OUTER PANEL.



NOTES: THE DETERMINATION OF HAND & OPERATION OF THIS FASTENER IS DEPENDENT ON THE ORIENTATION OF THE STOP WASHER WITH RESPECT TO THE *T* BAR HANDLE. FOR PROPER ORIENTATION SEE TABLE I.



ALLEGIS

1-866-378-7550

MATERIAL:

DRAWING NO.:

68-10-101-10

FINISH:

Zinc Plate, bright chromate

REV.:

1:1

DATE:

5/29/2019